

BOTANISCH MUSEUM  
5-MRT. 1936 22589 A  
UTRECHT

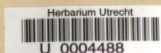
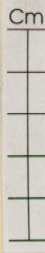


Revised for Flora Neotropica

*Clarisia biflora* R. & P.

Det.: C.C.Berg

1982-1983



HERB. ACAD. RHENO-TRAI.

*Clarisia biflora* Ruiz et Pavon

Det. 19

Hab. Peru, Chiriquo

Leg. Ruiz & Pavon

d. d. ex herb. Madrid. No. 1

TYPE!

The Field Museum (F)  
VTypes Project

FIELD MUSEUM OF  
NATURAL HISTORY  
NEGATIVE NO.  
68074



The Field  
Museum



Isotype of:  
*Sahagunia mexicana* Liebm.  
Kongel. Danske Vidensk. Selsk. Skr.,  
Naturvidensk. Math. Afd., ser. 5 2: 316. 1851.

614080  
HERBARIUM  
FIELD MUSEUM

TYPE COLLECTION



Duplum  
Universitetets botaniske Museum, København.  
Museum botanicum Hauniense.  
Plantae mexicanae Liebmann. 1841-43. Nr. 14259  
*Sahagunia mexicana* Liebm.  
det.  
*Sahagunia mexicana* Liebm.  
Cronquist & S. M. Davis, *Statella*

*Clarisia biflora* R. & P.  
ssp. *mexicana* (Liebm.) W. Burger  
Det. William C. Burger;  
Missouri Bot. Gard.; 1961

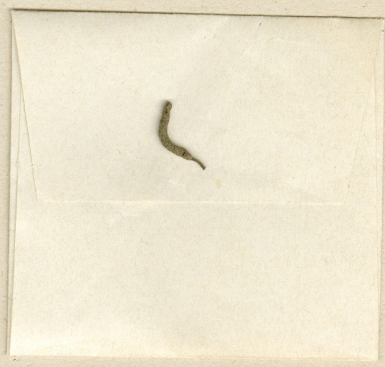
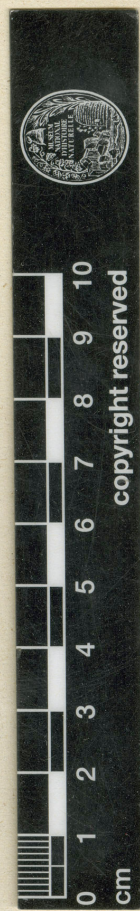
ISOTYPE

65  
Morae

mor.



La tige est déjà coupée!  
- quand je regardai la  
plante.  
Paris, 92. 7/23. H. St. Picherey

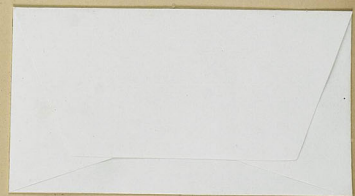
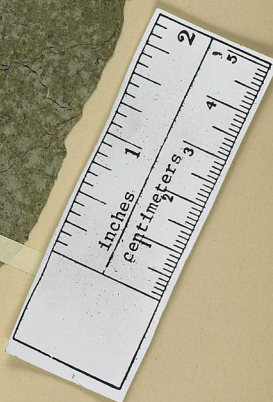


ISOTYPE

Herb. Hort. Bot. Hafn.  
*Liebm. Mex.*  
*Sahagunia mexicana* Liebm.  
Mirador.  
Mart.

Herbier Muséum Paris  
P00756662

HERB. MUS. PARIS.



UNITED STATES NATIONAL HERBARIUM.  
DEPOSITED BY THE U. S. DEPARTMENT OF AGRICULTURE.

PLANTS OF MEXICO.

*Castilleja lactiflora* O. F. Cook  
H. 6.

Zacualpa, Soconusco.  
No. 834. O. F. Cook. April 30, 1902.

Revision of Olmedieae

*Castilleja elastica* Sessé in Corv.

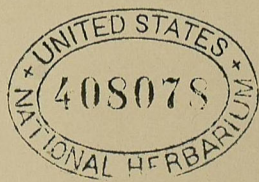
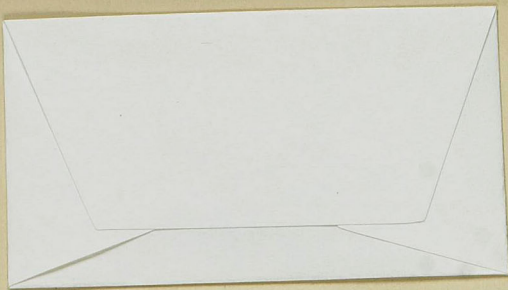
ssp. *elastica*

Reobotype of *Castilleja lactiflora* O. F. Cook

Type

Det. C. C. Berg

Utrecht, no. IV-1967



Revision of Olmedieae  
*Castilla elastica* Sesse in Cerv.  
 ssp. *elastica*  
 Holotype of *Castilla guatemalensis* Pittier  
 Det. C. C. Berg Utrecht, 20-IV-1967

UNITED STATES NATIONAL HERBARIUM  
 DEPOSITED BY THE U. S. DEPARTMENT OF AGRICULTURE.

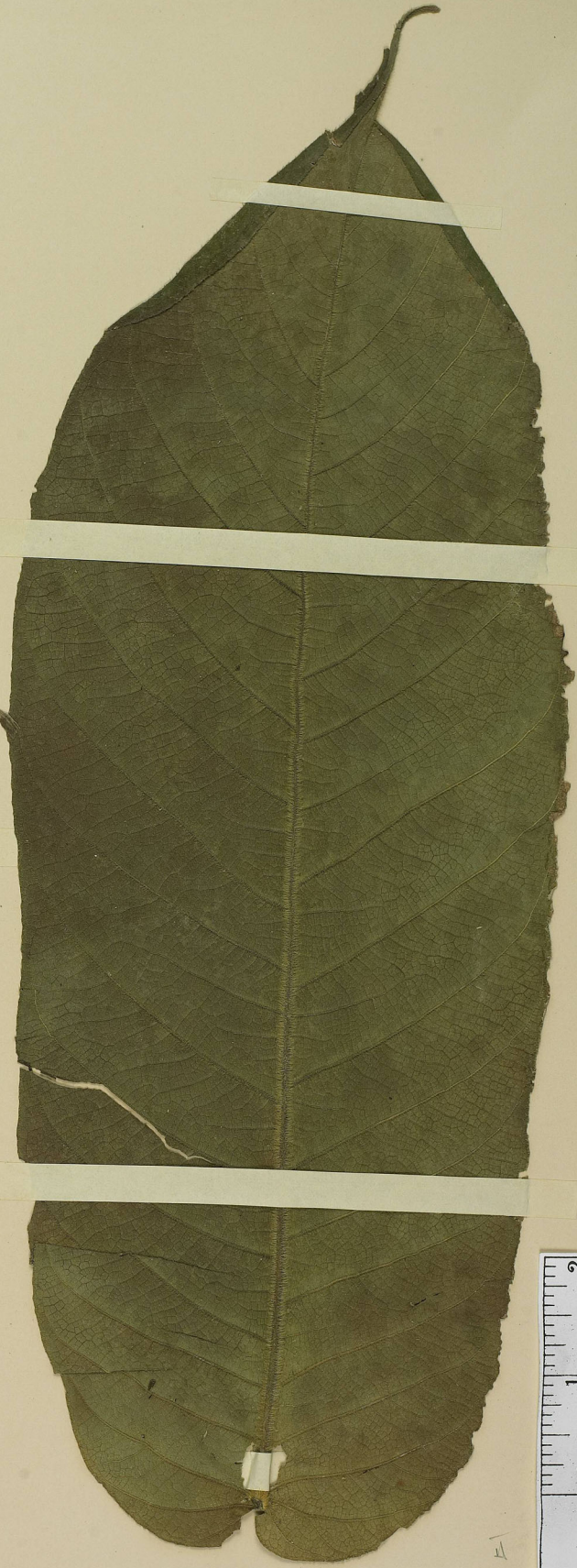
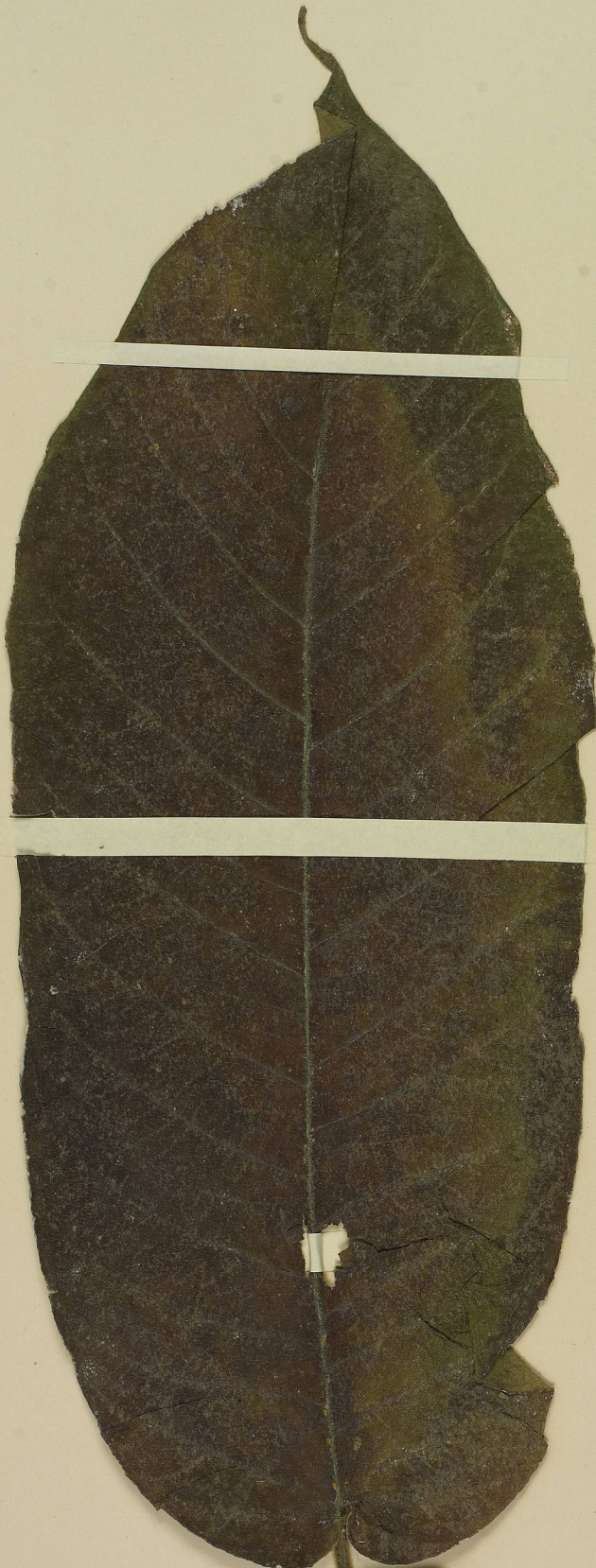
PLANTS OF GUATEMALA  
 NEAR THE FINCA SEPACUTE, ALTA VERA PAZ  
*Castilla guatemalensis* Pittier  
 H. G.  
 Secangium  
 No. 295: O. F. COOK } Collectors  
 R. F. GRIGGS } March 29, 1902

Publ. as *C. guatemalensis* Pitt.

Type



297

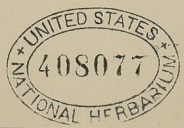


UNITED STATES NATIONAL HERBARIUM.  
DEPOSITED BY THE U. S. DEPARTMENT OF AGRICULTURE.

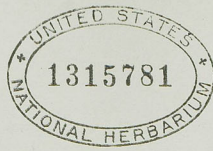
296

publ. as *C. guatemalensis*

Type



PLANTS OF GUATEMALA  
NEAR THE FINCA SEPACUTE, ALTA VERA PAZ  
*Castilla guatemalteca* Pittier  
H. G.  
*Decanquin*  
No. 295 O. F. COOK & R. F. GRIGGS Collectors March 29, 1902.



Castilla costaricana Liebm.  
From type material in Herb. Copenhagen  
Prope Turrialba, Costa Rica.  
Oersted 5864 1845-48

Fragment material  
in closed pocket



*Isotype*



Revision of Olmedieae

*Castiela elastica* Sesse in Cerv.  
sp. costaricana (Liebm.) C. C. Berg

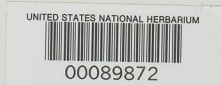
Isotype of *Castiela costaricana* Liebm.

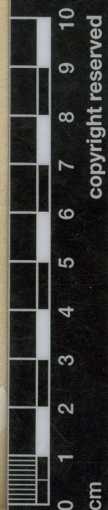
Det. C. C. Berg

Utrecht, 20-IX-1967

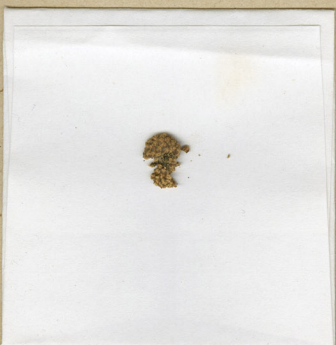
279

*mm.*





copyright reserved



15651

Herbier Muséum Paris  
P00745474

ISOTYPE

HERB. MUS. PARIS.  
*Poulsenia aculeata*  
*Poulsenia aculeata* Eggers  
Manahi, Eggers, Herbarium Ecuadorense  
(15651)  
V.  
Recue le 9 novemb





15651

ex numero a Rensch in Bot Jahrb.  
221 360  
citato.



= *Poulsenia armata* (Nig.) Standl.

EGGERS: FLORA ECUADORENSIS EXSICCATA

IMPRIMIS IN SITO EL RECREO DICTO LECTA:

PROVINCIA MANABI, 1° LAT. AUSTRAL.

Nr. 15.651. *Arctocarpus*

*Poulsenia aculeate*, Eggers.

1160



*Poulsenia aculeata* Eggers  
 in Bot. Centralbl. 73(1898) 49.  
 cum typo compar. et det. *Milbrandt*



UNITED STATES NATIONAL MUSEUM

*Poulsenia armata* (Miq.) Standl.  
 Det. C. C. Berg Utrecht  $\overline{1-x}$  1980

"Chirimoya, Carnero."  
 Flower heads always 2 opposite,  
 Very large leaves, more than 1/2 m.  
 long, with thorns on main nerves.  
 Fruit edible like Annona.



UNITED STATES NATIONAL HERBARIUM  
*Poulsenia armata* (Miq.) Standl.,  
 Trop. Woods 33: 4. 1933.  
 Published as *Coussapoa rekoii* Standl.  
 det. *Elbert L. Little Jr.* 1977.

PLANTS OF MEXICO *Tyke*  
*Coussapoa aculeolata* Standley  
 Capetal Concordia (Cerro Espino),  
 Oaxaca, alt. 600 m.  
 B.P. Rexo #3590 Nov. 15, 1917



[Blank white label]

Revision of Olmedieae

*Pseudolmedia oxyphyllaria* Donn. Smith

holotype

Det. C. C. Berg

Utrecht, 20. iv - 1967



788



UNITED STATES NATIONAL HERBARIUM.

DEPOSITED BY THE DEPARTMENT OF AGRICULTURE.

EX PLANTIS GUATEMALENSIBUS NECNON SALVADORENSIBUS  
HONDURENSIBUS NICARAGUENSIBUS COSTARICENSIBUS,  
QUAS EDIDIT JOHN DONNELL SMITH,

4429. *Pseudolmedia oxyphyllaria*, Donnell Smith  
in Bot. Gaz. xx. 294.  
Volcan Tecumburro, Depart. Santa Rosa, Guatemala,  
alt. 6000 pp.

M. Febr. 1893.

Leg. Heyde et Lux.

*min*

6629 (Vinter)

UNITED STATES NATIONAL HERBARIUM

Type No. 1284-

*Pseudolmedia oxyphyllaria* Donnell Smith

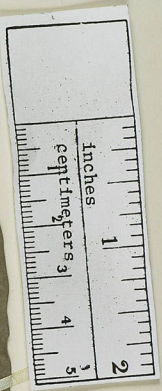
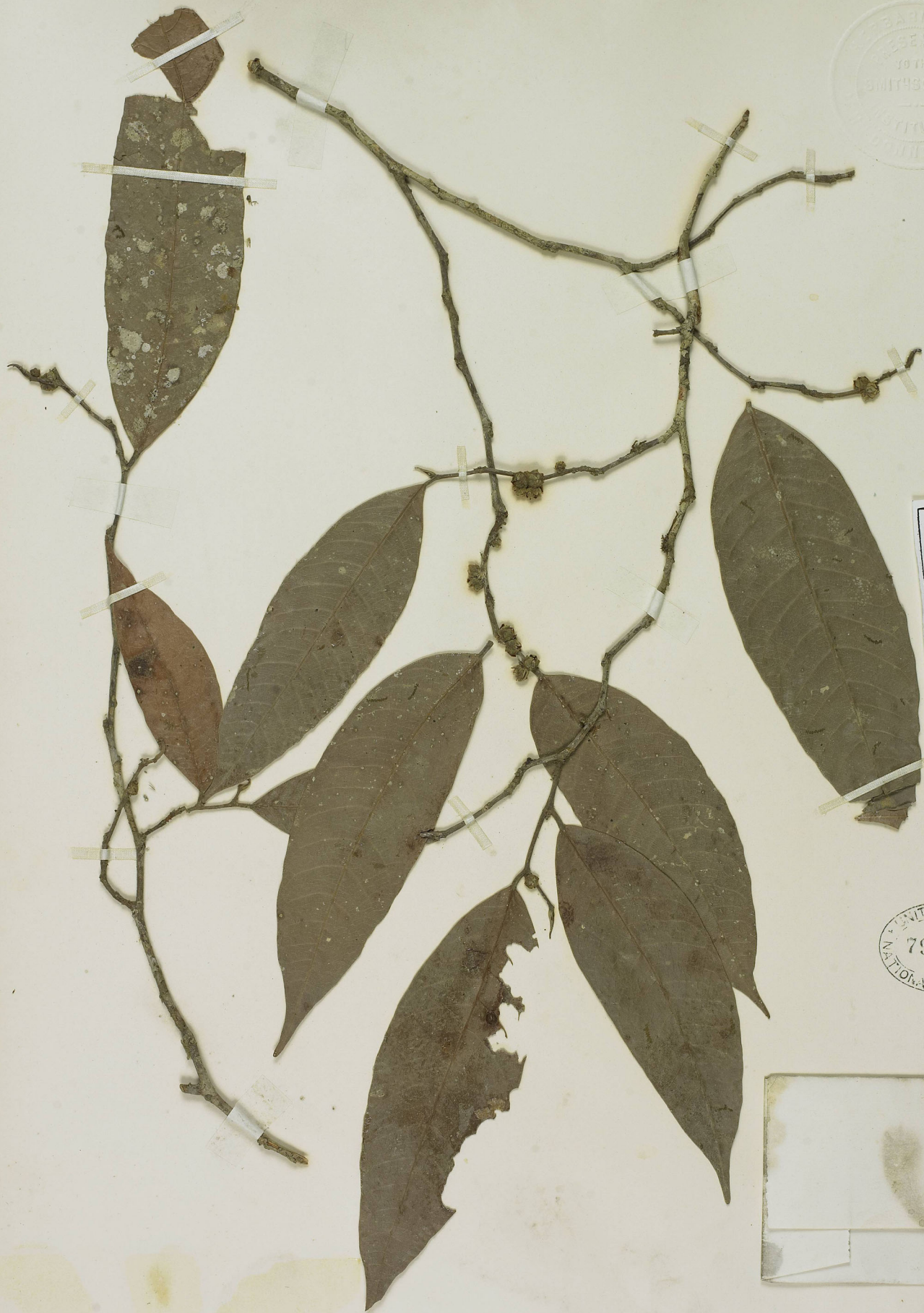
Type of

Bot. Gaz. 20: 294 (1893)

UNITED STATES NATIONAL HERBARIUM



00089905



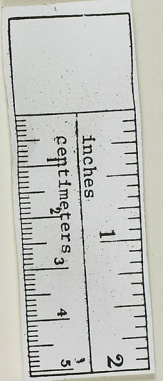
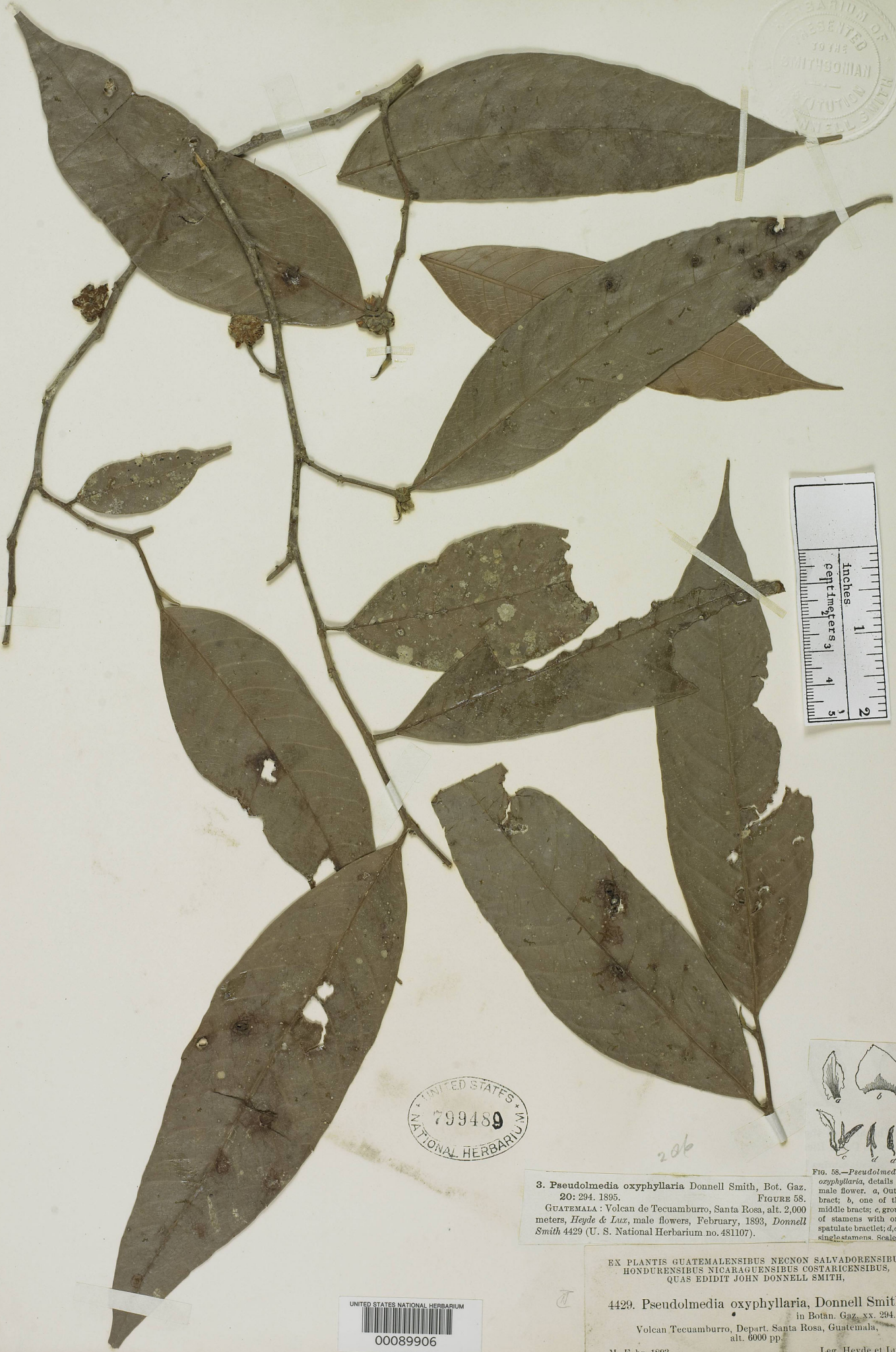
207

Field Museum of Natural History  
**ISOTYPE:** *Pseudolmedia oxyphyllaria*  
William C. Burger Donn. Sm. 1973



EX PLANTIS GUATEMALENSIBUS NECNON SALVADORENSIBUS  
HONDURENSIBUS NICARAGUENSIBUS COSTARICENSIBUS,  
QUAS EDIDIT JOHN DONNELL SMITH,  
4429. *Pseudolmedia oxyphyllaria*, Donnell Smith  
in Bot. Gaz. xx. 294.  
Volcan Tecunamburro, Depart. Santa Rosa, Guatemala,  
alt. 6000 pp.  
M. Febr. 1893. Leg. Heyde et Lux.

889



UNITED STATES NATIONAL HERBARIUM 799489



3. *Pseudolmedia oxyphyllaria* Donnell Smith, Bot. Gaz. 20: 294. 1895. FIGURE 58. GUATEMALA: Volcan de Tecuamburo, Santa Rosa, alt. 2,000 meters, Heyde & Lux, male flowers, February, 1893, Donnell Smith 4429 (U. S. National Herbarium no. 481107).

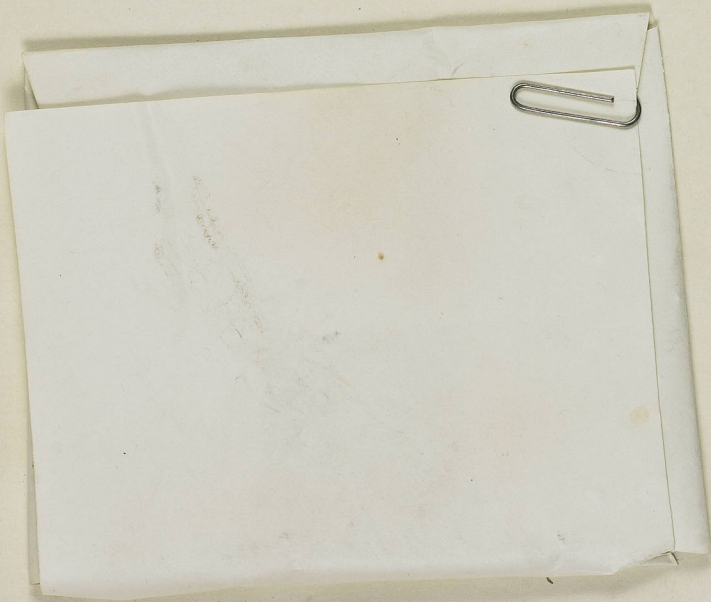
FIG. 58.—*Pseudolmedia oxyphyllaria*, details of male flower. a, Outer bract; b, one of the middle bracts; c, group of stamens with one spatulate bractlet; d, d', single stamens. Scale 3.

EX PLANTIS GUATEMALENSIBUS NEONON SALVADORENSIBUS HONDURENSIBUS NICARAGUENSIBUS COSTARICENSIBUS, QUAS EDIDIT JOHN DONNELL SMITH,

4429. *Pseudolmedia oxyphyllaria*, Donnell Smith in Botn. Gaz. xx. 294. Volcan Tecuamburo, Depart. Santa Rosa, Guatemala, alt. 6000 pp. M. Febr. 1893. Leg. Heyde et Lux.

UNITED STATES NATIONAL HERBARIUM 00089906

888



Revision of Neotropical Brosimeae  
 Brosimum alicastrum Swartz  
*ssp. alicastrum*  
*Redotype of B. conzattii Standley*  
 Det. C. C. Berg Utrecht, 26-III 1970



UNITED STATES NATIONAL MUSEUM

226

3286-Brosimum?  
 Dto. Pochutla, Oax.  
 Mts. 800, May. 14, 1917  
 Conzatti, Reko  
 & Makriņius  
 Cafetal San Rafael



PLANTS OF MEXICO *Type*  
*Brosimum conzattii Standley*  
 C. Conzatti #3286

LUNDELL  
HERBARIUM

The University of Texas  
AUSTIN, TEXAS

Cite: LL



#646 TYPE OF  
*Brosimum gentlei* Lundell  
Wrightia 3: 166. 1966.

ANNOTATION LABEL

*Brosimum gentlei* Lundell, sp. nov.

Determined by C. L. Lundell

TYPE!

DISTRIBUTED BY C. L. LUNDELL

PLANTS OF BRITISH HONDURAS  
TOLSON DISTRICT

Large tree, along creek, Maffredye Creek  
near San Antonio.

POCY H. GENTLE

No. 531b

Date April 3, 1965

University of Texas - Austin (L. J. TW)



00370457

Treated in 1967 with  
lauryl pentachlorophenate!

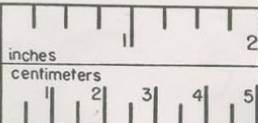


DUPLICATE  
from the  
LUNDELL HERBARIUM

FIELD MUSEUM OF  
NATURAL HISTORY

NEGATIVE NO.

61812



HERBARIUM  
FIELD MUSEUM

1967998

not *B. alicastrum*! f.H.G. 1986!

Isotype of:  
*Brosimum gentlei* Lundell  
Wrightia 3(8): 167. 1966.

Revision of Neotropical Brosimeae  
*Brosimum alicastrum* Swartz

*Ssp. alicastrum*  
Isotype = *B. gentlei* Lundell

Det. C. C. Berg

Utrecht, 14-5 1969

DISTRIBUTED BY C. L. LUNDELL  
PLANTS OF BRITISH HONDURAS  
TOLEDO DISTRICT

*Brosimum Gentlei* Lundell, sp. nov.

ISOTYPE!

Large tree, along creek, Mofredye Creek,  
near San Antonio.

PERCY H. GENTLE  
No. 5314

Date April 13, 1945





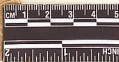
ANNOTATION LABEL

Brosimum gentlei Lundell, sp. nov.

Described by C. L. Lundell      ISOTYPE!

ISOTYPE OF  
Brosimum gentlei Lundell  
Wrightia 3: 166. 1966.

LUNDELL  
HERBARIUM



UNIVERSITY OF TEXAS AT AUSTIN (UTEX)



00370458

LUNDELL  
HERBARIUM

The University of Texas  
AUSTIN, TEXAS

Cite: LL

DISTRIBUTED BY C. L. LUNDELL  
PLANTS OF BRITISH HONDURAS  
TOLUCA DISTRICT

Large trees, along creek, Moffredy Creek  
near San Antonio.

Percy H. Gentile  
No. 531h

Date April 3, 1945



HERBARIUM  
COLUMBIA UNIVERSITY,  
NEW YORK.

IMAGED

NEW YORK BOTANICAL GARDEN  
00025210

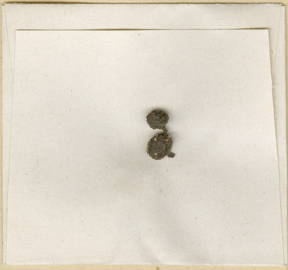
Revision of Neotropical Brosimeae  
*Brosimum lactescens* (S. Moore) C. C. Berg  
*Isolateotype of Brosimum*  
*lactescens* S. Moore  
Det. C. C. Berg  
Utrecht, 10-VII-1970



140 N. 120, 121  
ITER MATOGROSSENSE. 1891.92.  
Spencer Moore.  
No. 677 ♀  
*Brosimum lactescens* S. Moore  
(gen. et sp. nov.)



copyright reserved



HERB. MUS. PARIS.

*Brosimum lactescens* (Sp. Moore)  
C.C. Berg  
Isotype of *Brosimum lactescens*  
Sp. Moore  
Det. C.C. Berg 10-9-69

ISOTYPE

ITER MATOGROSSENSE. 1891.92.  
Spencer Moore.

No. 677

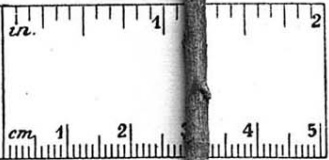
♀

*Brosimum lactescens* S. Moore  
(Sen. & ef. nov.)

Reçu le 12 Juillet 1895



11684



Herbarium botanicum Berolinense

ITER MATOGROSSENSE. 1891.92.

Spencer Moore.

Accessit ♀

No. 677

7 NOV. 1893

Brasimopsis

lactescens S. Moore

(Gen. + sp. nov.)

Mus. bot.