

Ficus Anandegui Standley
Co-type

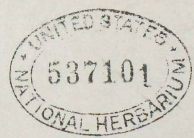
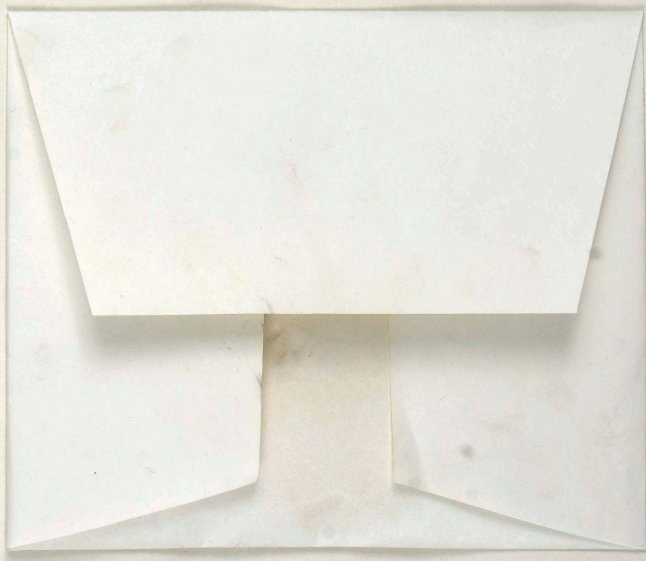
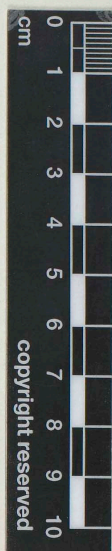
FLORA
OF
LOWER CALIFORNIA.
Ficus Palmeri Watson
San Jose del Cabo
T. S. G. Sept. 15 - 1899.

NY IMAGED

NEW YORK BOTANICAL GARDEN



00025260

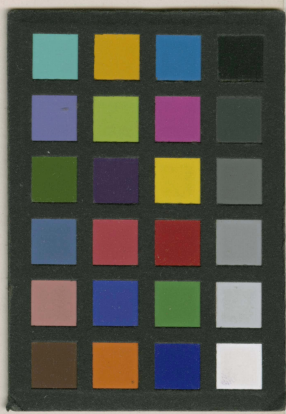
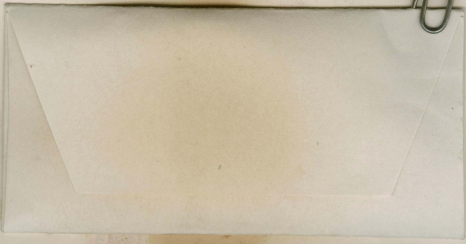
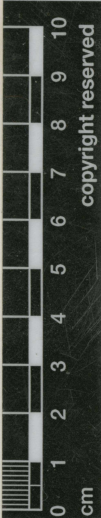


UNITED STATES NATIONAL MUSEUM

PLANTS OF MEXICO

Ficus Brandegei Standley, sp. nov.
(*Fyfea* exco.; Herb. Univ. Calif. 142205)
San José del Cabo, Lower California
T. S. Brandege, exco. Sept. 15, 1899.





33

La Palma, Jalisco 6-7-1892.

A very large tree, with the general appearance and habit of the mahogany (caoba), or *Gleditsia triacanthos* many ash trees.

M.E.



Ficus jonei Standley

UNITED STATES NATIONAL HERBARIUM.

DEPOSITED BY THE U. S. DEPARTMENT OF AGRICULTURE. *type*

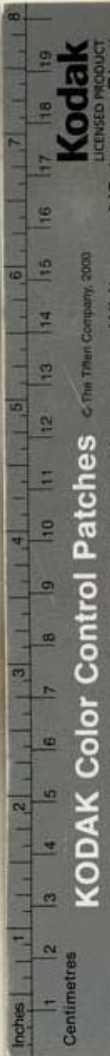
33

Very large tree, with the general appearance and habit of the mahogany (caoba), or *Gleditsia triacanthos* many ash trees. Fig.

Locality: La Palma, Jalisco, Mexico

Collector: M. E. Jone June 7, 1892.

GRAY HERBARIUM
HARVARD
UNIVERSITY



Plantae Cubenses Wrightianae.

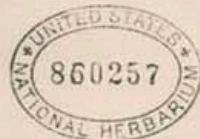
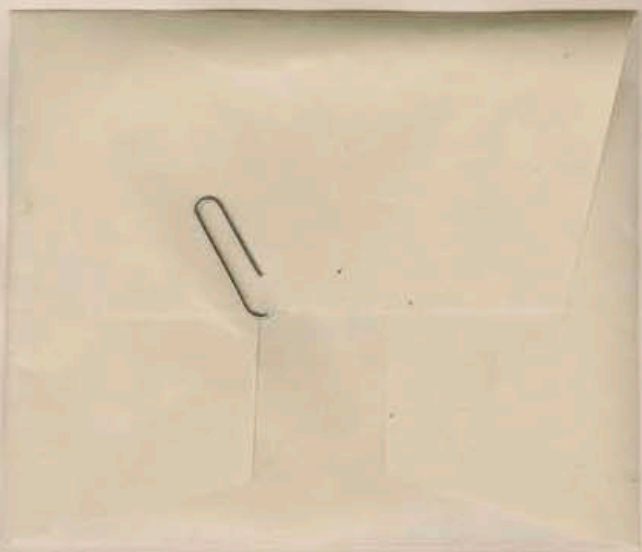
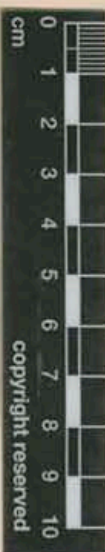
No.

ISO TYPE

Ficus membranacea W.

Coll. C. WRIGHT, 1865.

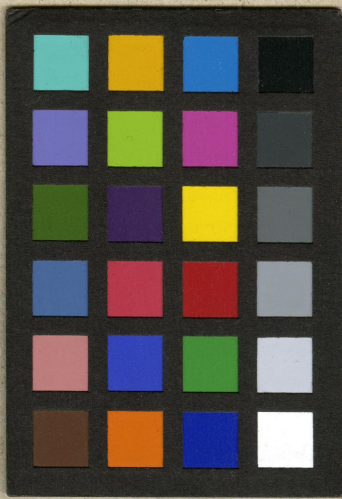
THE HARVARD UNIVERSITY HERBARIUM
0004482



UNITED STATES NATIONAL MUSEUM
DEPOSITED BY THE U. S. DEPARTMENT OF AGRICULTURE

Image No
00090034

PLANTS OF MEXICO
Ficus cookii Standley *Type*
Pedicellate fruits less numerous above ripe sessile fruits,
the first ones all seed bearing. Small sessile fruit red, ripe
sessile fruits becoming pinkish - N.B. - Specimen in flower (a)
San Vicente (Chiapas)
No. 73 O. F. Cook, Collector June 5th 1901



Herbier Museum Paris
P00669784

HERB. MUS. PARIS.
Herbier Humboldt & Bonpland.
AMÉRIQUE ÉQUATORIALE.

Ficus velutina Willd.
n. n. 2102.

ISOTYPE





ISOTYPE

Herb. Muséum Paris
P00089310

Herb. MUS. PARIS.
Ficus velutina Willd.
Higueron incels.
Almaque, Paffo,
Herbier de l'Amérique Equatoriale,
donné par M. A. BONPLAND.
N. 2107.

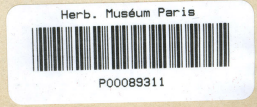


ISOTYPE

4

No. 2102.
Ficus velutina (Nobis)

Herb. MUS. PARIS,
Ficus velutina Willd.
Raffo.
Herbier de l'Amérique équatoriale,
donné par M. A. BONPLAND.
N. 202.





HERBARIUM OF U. S. DEPARTMENT OF AGRICULTURE.

Ficus pringlei S. Wats.

F. microchlamys Standley
Locality: Mexico
Collector: S. G. Pringle Oct. 9 1891
Type

Image No.

UNITED STATES NATIONAL HERBARIUM



00090186

C. G. PRINGLE,
PLANTÆ MEXICANÆ.
1891.

—STATE OF JALISCO—

3883 Ficus

Rocky bluffs of barranca near Guadalupe.

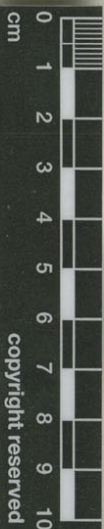
9, October.

082

FIELD MUSEUM OF
NATURAL HISTORY

NEGATIVE NO.
67695

The Field Museum (F)



copyright reserved

The Field
Museum

220275
HERBARIUM
FIELD COLUMBIAN
MUSEUM

ISOTYPE (holotype at U.S.)

Field Museum of Natural History

Ficus microchlamys Standley

Cont. U.S. Nat'l. Herb. 20;23, 1917

Gary S. Visconti

1976

C. G. PRINGLE,
PLANTÆ MEXICANÆ.
1891.

—STATE OF JALISCO—

3883 *Ficus*

Rocky bluffs of barranca near Guadalajara.

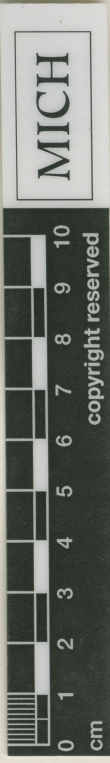
9, October.

F. microchlamys Standley



FEB 1 1961

UNIVERSITY
HERBARIUM
OF MICHIGAN



HERBARIUM OF THE UNIVERSITY OF MICHIGAN

Ficus velutina Willd.

DETERMINED BY C. C. BOYD 6/3/94

University of Michigan Herbarium

1115116

TYPE-COLLECTION of
Ficus microchlamys Standley

Reference: Contr. U.S. Nat. Herb. 20:23. 1917

Verified by: J. Rzedowski Date: April 1964

Remarks: ISOTYPE Pringle 3883

Ficus microchlamys Standl.

C. G. PRINGLE,
PLANTÆ MEXICANÆ.
1891.

—STATE OF JALISCO—

3883 Ficus

Rocky bluffs of barranca near Guadalajara.


9, October.



Ficus vitulana Willd.
Isotype of *F. microchlamys* Standley
DET. C.C. Berg 12/10 1992

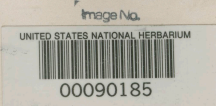
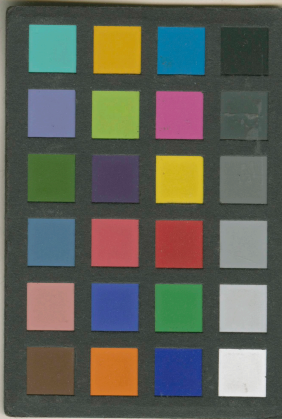
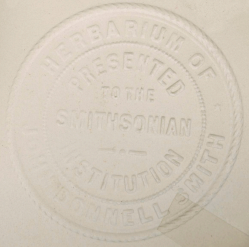
Ficus cotoniifolia H.B.K.
DET. C.C. Berg 12/21 1979

C. G. PRINGLE,
PLANTÆ MEXICANÆ.
1891.
—STATE OF JALISCO—
3883 Ficus
Rocky bluffs of barranca near Guadalajara.
9, October.

Herbier Muséum Paris

P00756627

TYPE
ISO

HERB. MUS. PARIS
HERBIER E. DRAKE

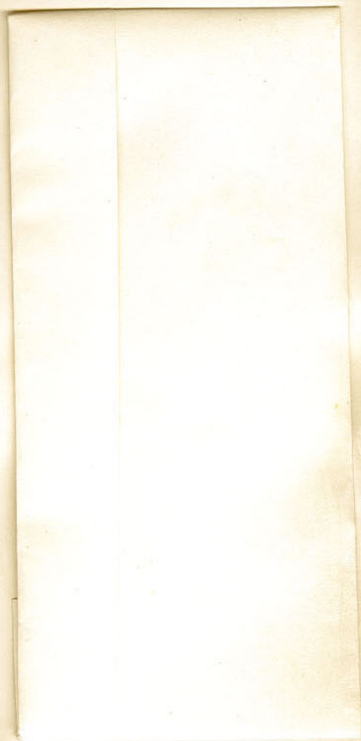


C. G. PRINGLE,
 PLANTÆ MEXICANÆ.
 1891.
 —STATE OF JALISCO—
 3883 *Ficus microchlamys* *sp. nov.*
 Rocky bluffs of barranca near Guadalajara.
 9, October.

175

FIELD MUSEUM OF
NATURAL HISTORY
NEGATIVE NO.
67886

The Field Museum (F)
VTypes Project



Prob. Type of:
Ficus pringlei S. Watson
Proc. Amer. Acad. Arts 26: 150. 1891.

CO-TYPE

220258
HERBARIUM
FIELD COLUMBIAN
MUSEUM

C. G. PRINGLE,
PLANTÆ MEXICANÆ.
1891.
—STATE OF JALISCO—
3865 *Ficus Pringlei*, Watson, n. sp.
Rocky bluffs of barranca near Guadalajara.
From a small to a medium sized tree. Fruit eaten.
12, September.

HERBARIUM
J. K. SMALL,
PURCHASED

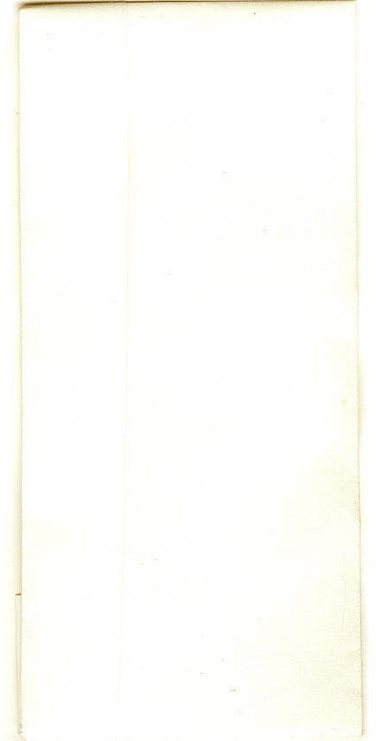
FIELD MUSEUM OF
NATURAL HISTORY

NEGATIVE NO.
67886

The Field Museum (F)



vTypes Project



No! CO-TYPE
TYPE IS PRINGLE 2928

220258
HERBARIUM
FIELD COLUMBIAN
MUSEUM

C. G. PRINGLE,
PLANTÆ MEXICANÆ.
1891.

—STATE OF JALISCO—


3865 *Ficus Pringlei*, Watson, n. sp.

Rocky bluffs of barranca near Guadalupe.
From a small to a medium sized tree. Fruit eaten.
12, September.





Ficus pringlei Watson
 ISOTYPE!
 Det.: M. Vásquez Avila Utrecht 1983

Herbier Muséum Paris

 P00756631

C. G. PRINGLE,
 PLANTÆ MEXICANÆ.
 1891.
 —STATE OF JALISCO—
 3865 *Ficus Pringlei*, Watson, n. sp.
 Rocky bluffs of barranca near Guadalajara.
 From a small to a medium sized tree. Fruit eaten.
 12, September.

HERB. MUS. PARIS
 PRÊT N°
 161
 82
 PHANEROGAMIE

HERB. MUS. PARIS.
 30
 Reçu le 1. Juillet 1892.



FIELD MUSEUM OF
NATURAL HISTORY

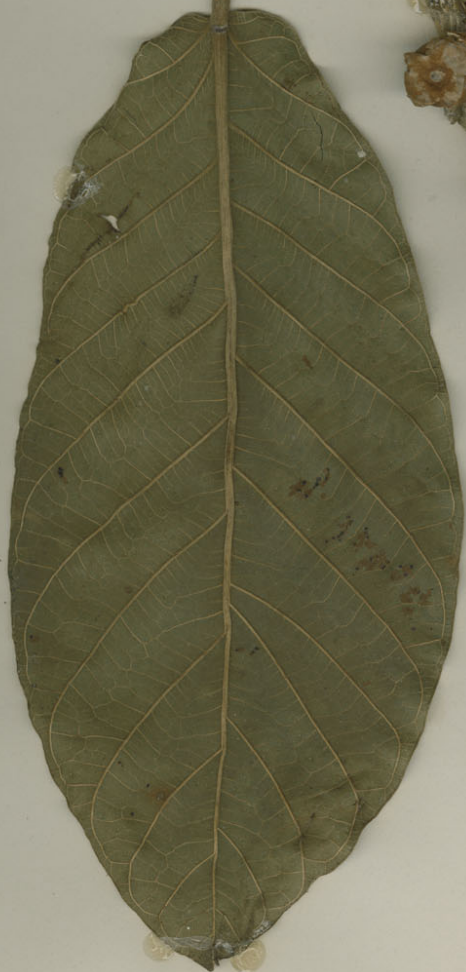
NEGATIVE NO.
67700

The Field Museum (F)



vTypes Project

4004



copyright reserved

The Field
Museum

1705596

FIELD MUSEUM
OF
NATURAL HISTORY

Holotype of:
Ficus turrialbana W.C. Burger
Phytologia 26(6): 429. 1973.

4004

COSTA RICA
Field Museum of Natural History

Ficus turrialbana W. Burger

HOLOTYPE!

Tree 20m tall, crown not spreading,
stems 40-50cm dbh., figs brownish,

mid-1972 WB

Above Turrialba 800m.

William Burger

19-20 Dec. 1966

BOTANISCH MUSEUM
297162 B 18 JAN. 1974
UTRECHT



Herbarium Utrecht
U 0004693



4004 COSTA RICA
Field Museum of Natural History
ISOTYPE:
Ficus turrialbana W. Burger
WB-1972
Tree 20m tall, crown not spreading,
stems 40-5-cm dbh., figs brownish.
Above Turrialba 800m.
William Burger 19-20 Dec. 1966

UNITED STATES

2748206

NATIONAL HERBARIUM



COSTA RICA

Field Museum of Natural History

4004

ISOTYPE:

Ficus turrialbana W. Burger

WB-1972

Tree 20m tall, crown not spreading,
stems 40-50cm dbh., figs brownish.

Above Turrialba 800m.

William Burger

19-20 Dec., 1966





Herb. Univ. Halensis
HAL 81714



Herbarium BG - University of Bergen
Isotyp. of Urostigma glyccarpum
Miq.
Det. C.C. Berg sh 1998

Herbarium BG - University of Bergen
Trema velutina Willd.
Det. C.C. Berg sh 1998



Herbarium Universitatis Halensis
Urostigma glyccarpum Miq.
Verslagen Meded. Afd. Natuurk. Kon. Akad. Wetensch.: 13: 407
(1862)
Mexico: Hacienda de la Laguna
leg.: Schiede, C.J.W. am: 1829-07
det.: am:

Ficus
Hacienda de la Laguna
Jul. 29.
C.J.W. Schiede



© Herbarium HAL